

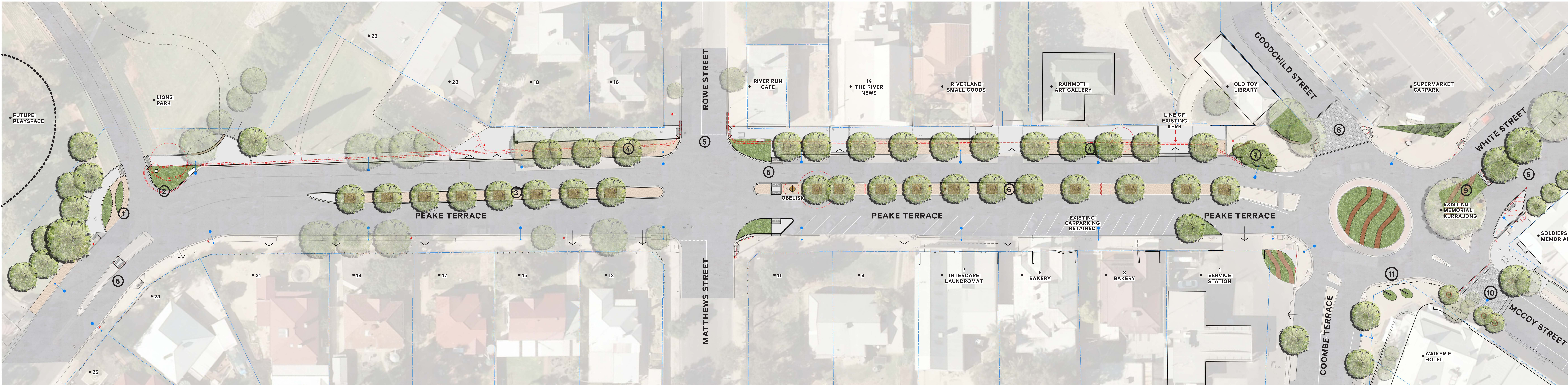
Peake Terrace

WAIKERIE CBD REVITALISATION



Key Elements

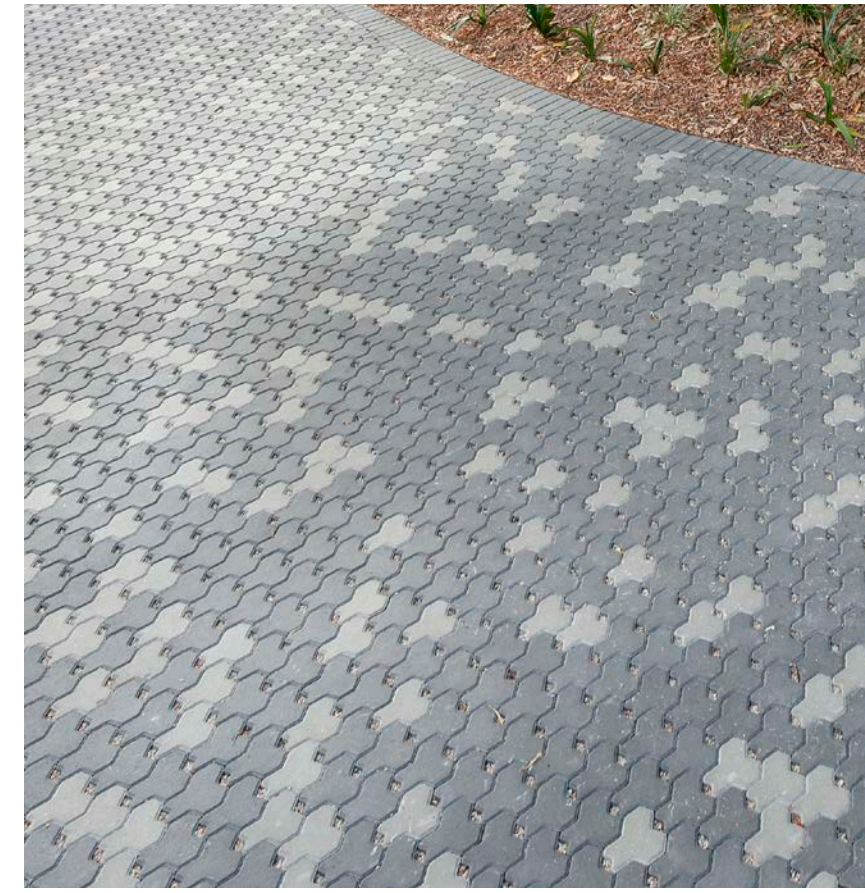
- 1 — Improved park entry with limestone wall, signage and planting.
- 2 — Improved stormwater and new planting.
- 3 — New central median with tree planting.
- 4 — Widened verge, new footpath and street trees.
- 5 — Improved pedestrian crossing point.
- 6 — Improved median and new street trees.
- 7 — Local native planting and sculpture log seat.
- 8 — Improved crossing and paved threshold.
- 9 — Improved planting surrounding roundabout.
- 10 — Improved entry to McCoy Street with raised planters and flowering trees.
- 11 — Feature signage markers.



Elements



HOTMIX



TRAFFICABLE PAVERS



UNIT PAVING



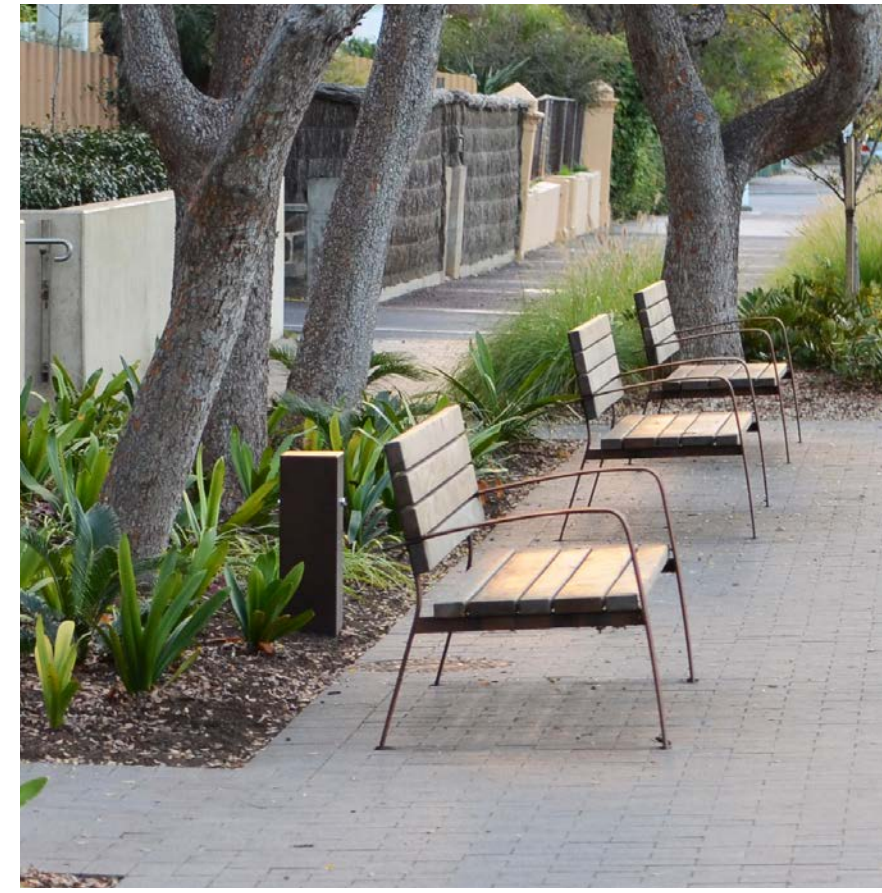
RIVER CLIFFS



RED ROCK MULCH



COMPACTED GRANULITIC SAND



IMPROVED AMENITY AND FURNITURE



LIMESTONE WALLS



FEATURE ENTRY BLADES



RAISED PLANTERS



PUBLIC ART / LOG SEATING



SOPHORA JAPONICA (JAPANESE PAGODA)



LAGERSTROEMIA INDICA (CREPE MYRTLE)



QUERCUS CERRIS (TURKEY OAK)



GLEDDITSIA TRICANTHOS 'SHADE MASTER'